

How To Lower Your Water Bill

Under the new system of water pricing, you have control over what you pay. You can make significant savings on your water consumption bill by implementing some of these simple tips around your home:

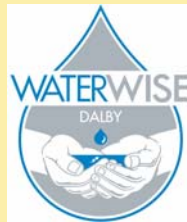
In The Home

- Read your water bill weekly to estimate your daily, monthly and annual water usage.
- Check for hidden leaks in the home and outside and replace tap washers regularly (a continuous dripping tap can waste up to 600 litres per day).
- Installing AAA water efficient shower heads, dual flush toilets and AAAA front loading washing machines can greatly reduce your water usage. Rebates are often available from Dalby Town Council.

In The Garden

- Toughen your lawn with only two waterings per week (1000L per hour) and water at night to prevent evaporation.
- Grow native plants
- Use mulch or worms to reduce run off and improve soil condition. Garden mulch can reduce evaporation by 75%.
- Sweep pathways instead of hosing

Be WaterWise!



Water Meter Testing

If you require your water meter to be tested to verify the accuracy, an application and the pre-payment of the fee must be lodged with Council. If the water meter is registering greater than 5%, in favour of the Council, the water meter testing fee will be fully refunded.

For More Information

Please contact Dalby Town Council WaterWise on (07) 4672 1178 if you would like further information on how you can save water.

Accompanying brochures:

Your Rates and Charges Explained

Water Audit

Your Watering Days

DALBY TOWN COUNCIL - USE OF WATER							
HOUSE	MON	TUES	WED	THURS	FRI	SAT	SUN
ODD NUMBERS	x		✓		✓		✓
EVEN NUMBERS	x	✓		✓		✓	



Water Meters, Leaks and Lowering your Water Bill



Water is a precious natural resource and one that we should use carefully and wisely, particularly in a predominately dry area like the Darling Downs. The Dalby Town Reticulated Water System is currently supplied from 13 subartesian bores in the Condamine River alluvium, three of these bores provide water for Dalby's Desalination Plant. The remainder of the supply is sourced from Loudoun Weir which has a capacity of approx. 588 ML, but is only 50% reliable.

Since the Dalby Town Council introduced its Demand Management Program (WaterWise) in 1997, overall water consumption has decreased by approx. 15%.

By continuing to use water carefully and wisely we can delay the major expense of constructing additional infrastructure such as bores, pipe lines, and water treatment plants.

The Less Water You Use, The Less You Pay!

Dalby Town Council bills for every kilolitre of water used, based on official meter readings. Meters are read and bills sent every 6 months, with a charging structure as follows:

- Access Fee* every 6 months;
- \$*/KL for first 125 KL in 6 months;
- \$*/KL for all water from 125 KL up to 15,000 KL in 6 months; and
- \$*/KL for all water in excess of 15,000 KL in 6 months

* rates and charges are set during Council's budget deliberations each financial year. You can find details of Water Charges in the "Your Rates and Charges Explained Brochure".

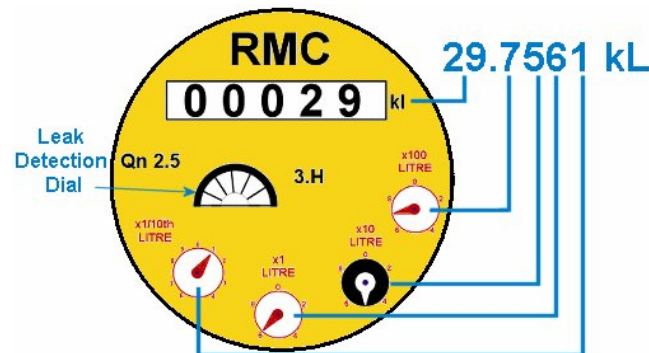
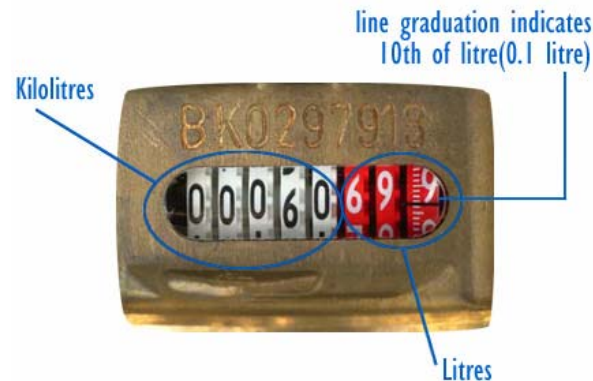
How to Read Your Water Meter

All the water that enters your property from the Council supply system is recorded on your water meter, generally located on the footpath. Below ground meters have a metal or plastic lid and above ground meters have a metal cover.

Once you have located your water meter, clean off any dirt from the dial (beware of insects). Read the meter from left to right.

Black digits denote **kilolitres** (1,000 litres) and red digits denote **litres**.

This meter is reading 60.699 kilolitres.



Spare A Thought For The Meter Reader

It only takes a few moments for us to read your water meter but this simple job is sometimes made difficult when we don't have easy access to the meter.

- A clear space of at least 300 mm around and 1200 mm above your water meter is required. Please clear dirt and mulch and prune overgrown plants.
- If you have a dog, please display a sign and keep the dog secured away from the meter area. All we need is a few moments each year to read your meter.

How to check for leaks

Leaks can occur in house water pipes, fittings and appliances. They are not always visible so the best method of detection is to read your water meter regularly. If your consumption increases dramatically for no obvious reason, there could be a hidden leak.

Other methods of leak detection include:

- Check the toilet system by pouring some food colouring into the cistern. If the colouring appears in the toilet bowl before flushing, you have a leak.
- Turn off every tap in the house and check the reading on your water meter. Do not use water (or flush the toilet) for at least 30 minutes or overnight then check the meter again. If it has moved you have a leak
- Some meters have a leak detection dial. If it is moving when no water is being used, you have a leak.